

**CLAMPING CHUCK JF ULTRA-FLAT WITH A SET OF REVERSIBLE, CASE-HARDENED, GROUND TOP JAWS TYPE D**



**TYPE D | ITEM NO.**

JF 3D 55		193516.00
JF 6D 55		193515.00
JF 3D 70		193536.00
JF 6D 70		193535.03
JF 3D 100		195089.00
JF 6D 100		193571.03
JF 8D 150		195035.00

**CLAMPING CHUCK JF ULTRA-FLAT ANTI-CORROSIVE (REINOX)  
PARTICULARLY SMOOTH RUNNING, WITH A SET OF REVERSIBLE, CASE-HARDENED, GROUND TOP JAWS TYPE D**



**TYPE D ANTI-CORROSIVE | ITEM NO.**

JF 3D 55		193516.63
JF 6D 55		193515.63
JF 3D 70		193536.63
JF 6D 70		193535.63
JF 3D 100		195089.63
JF 6D 100		193571.63
JF 3D 150		10162.002
JF 8D 150		195035.10
JF 3D 200		195280.00
JF 6D 200		10118.001

**1 SET OF REVERSIBLE, CASE-HARDENED, GROUND TOP JAWS, TYPE D**

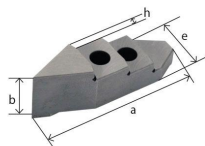
Spannbereiche Ø min.-max. [mm], Aufsatzbacken Typ D

JF Ø	55	70	100	150	200
Innenspannen	13-50	17-64	27-96	46-140	45-208
Aussenspannen	1-61	1-71	1.5-99.5	1.5-141	1.5-210

Backenmasse [mm]

a (Länge)	* b (Höhe)	e (Breite)	h (Stufenhöhe)
22	9.1	8	2
26	10.4	10	2.3
22	9.1	8	2
26	10.4	10	2.3
38.5	13.2	12	2.8
59.5	18	18	4
80	23.5	20	5
80	23.5	20	5

\* Höhe ab Futter-Oberfläche



## TYPE D | ITEM NO.

JF 3D 55 | 193273.10  
 JF 3D 70 | 193290.10  
 JF 6D 55 | 193271.10  
 JF 6D 70 | 193288.10  
 JF 6D 100 | 193317.00  
 JF 8D 150 | 195246.00  
 JF 3D 200 | 10162.11  
 JF 6D 200 | 10118.005

## TRANSLATION

Backenmasse = Dimensions of jaws  
 Aufsatzbacken = Top jaws  
 Spannbereiche = Clamping range  
 Innenspannen = Inner clamping  
 Aussenspannen = Outer clamping  
 Länge = Length  
 Höhe = Height  
 Breite = Width  
 Stufenhöhe = Height of step  
 Höhe ab Futter-Oberfläche = Height from chuck surface

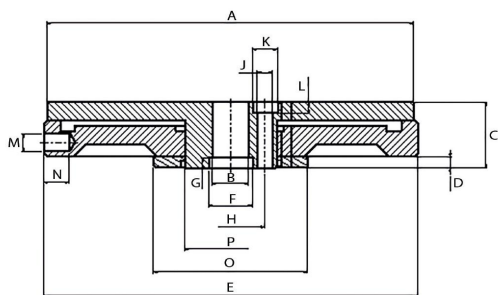
## CLAMPING CHUCK JF ULTRA-FLAT – DIMENSIONS

Masstabelle [mm]

JF Ø	55	70	85	100	125	150	200
A Ø	55	70	85	100	125	150	200
B H7 Ø	8	8	10	10	16	16	16
C	13.8	15.7	16.5	18.2	21.2	21.2	25.2
D	2.8	3.2	3.2	3.2	4.2	4.2	4.2
E Ø	57	72	87	102	127	152	202
F 0/+ 0.010 Ø	10	11	12	12	20	20	20
G	2.5	2.5	3	3	3.8	3.8	5.2
H Ø	14.5	17	18.8	18.8	28	28	28
J Ø	3 x 3.1	3 x 3.6	3 x 4.0	3 x 4.0	4 x 5.1	4 x 5.1	4 x 5.1
K Ø	5.2	5.2	6.1	7.2	9	9	9.5
L	3.6	4.8	5.5	6	6.2	6.2	6.2
M Ø	–	–	–	5	5	5	5
N	–	–	–	7	7	7	7
O Ø	32	37	42	42	50	50	50
P Ø	20	22	25	25	35	35	35
Gewicht in kg, ca.	0.3	0.5	0.9	1.1	2.5	2.8	4.4

Backen-Verfahrweg [mm]

JF Ø	55	70	85	100	125	150	200
Durchmesser	13	22	32	36	ca. 40	48	71



Zeichnung ohne Backen

## TRANSLATION

Masstabelle = Dimensions  
 Backen-Verfahrweg = Jaw travel path  
 Gewicht in kg = Weight in kg  
 Durchmesser = Diameter  
 Zeichnung ohne Backen = Drawing without jaws

